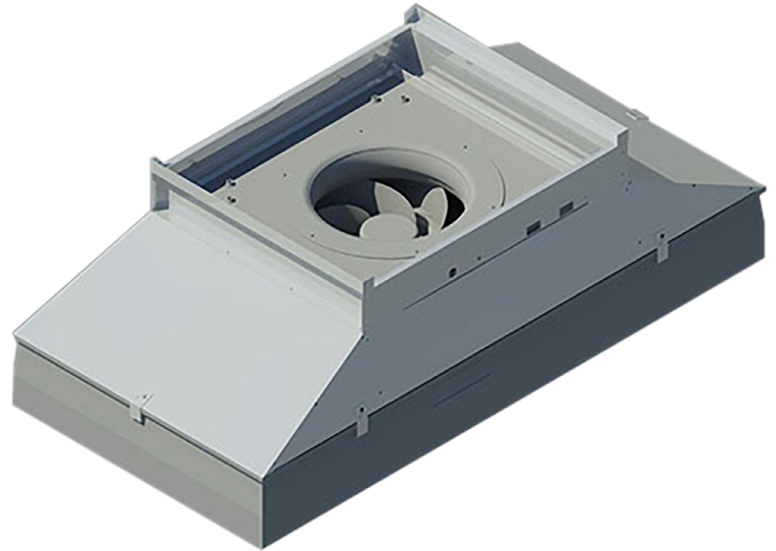


WHY?

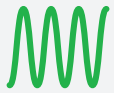
# SMARTHEPA

SMARTHEPA's features fit the requirement of any Cleanroom or critical environment. Our team can configure SMARTHEPA Fan Filter Modules (FFM) for custom applications.

Select SMARTHEPA Fan Filter Modules for your next project.



## Why should you include SMARTHEPA in your Cleanroom?



### AIRFLOW SETPOINT & MODULATION

SMARTHEPA uses **INDUSTRY 4.0** ready data transfer which allows an accurate set point to be achieved and provides multipoint feedback from SMARTHEPA for predictive maintenance and saves time commissioning.



### AIRFLOW

SMARTHEPA's powerful fan will achieve 110 FPM @2.5" WC External Static Pressure which makes it an excellent choice for new installations or in a retrofit when the current solution does not meet the requirements.



### ENERGY EFFICIENT

ECM Motors operating at 1/2 speed use 1/4 of the energy.

Where available, SMARTHEPA's have qualified for utility energy efficiency rebates.

*"We find the SMARTHEPA is a great product to work with. They are easy to adjust with central Modbus controller and produce very reliable repeatable air flows, even in demanding high static conditions. Balancing time is greatly reduced, particularly in situations where ceiling access is difficult."*

Jasbir Sahota  
Design Test and Balance











*"We have replaced a number of older fan powered HEPA units with the new SMARTHEPA in existing tight plenum spaces. With the extra fan capabilities of the SMARTHEPA we are consistently hitting the 90 FPM required for regulatory certification."*

Jim Kanaris  
Director of Facilities, Dalton Pharma Services



# SMARTHEPA

## Features & Benefits:

	<p><b>TWO-WAY COMMUNICATION</b></p> <p>Real-time, <b>INDUSTRY 4.0</b> ready, two-way communication using our optional Modbus controller or <b>SMARTHEPA</b> can utilize an existing Building Management System (BMS). Set your airflow, % signal or optionally a CFM and allow <b>SMARTHEPA</b> to reply back with real time information.</p>		<p><b>“NET LOW PROFILE”</b></p> <p><b>SMARTHEPA</b> is physically less than 16” with a pre-filter, and can be as low as 2” top clearance. The patent pending FlowGrid Technology allows airflow to be directed to the fan inlet in an efficient manner.</p> <p>There are lower physical profile units, which require higher top clearance.</p>
	<p><b>WIRELESS COMMUNICATION</b></p> <p>Optionally adjust the airflow from your connected device, Smartphone, Tablet or Computer.</p>		<p><b>EMERGENCY SETPOINT</b></p> <p>Should communication fail, the units will operate at a pre-programmed set point.</p>
	<p><b>LOW SOUND</b></p> <p>Sound data is difficult to quantify, as external Cleanroom factors and airflow achieved will affect the actual sound level. <b>SMARTHEPA</b>'s internal design achieves optimal airflow and low noise into the Cleanroom.</p>		<p><b>DAISY CHAIN WIRING</b></p> <p>The ability to connect multiple <b>SMARTHEPA</b> units on a single 208 Volt 15 Amp Circuit, with the cable provided.</p> <p>Communications daisy chain is via industry standard data cabling.</p>
	<p><b>EVEN AIRFLOW</b></p> <p><b>SMARTHEPA</b>'s internal design easily achieves laminar flow across the filter face.</p>		<p><b>HEPA FILTRATION</b></p> <p><b>SMARTHEPA</b> uses 99.999% HEPA Filters, and can be One Piece, Roomside Replaceable or Reverse Flow.</p>



info@smartheпа.com  
 1.866.625.8621 | www.smartheпа.com  
 8011 Highway 89 West  
 P.O. Box 941, Alliston, ON L9R 1W1  
 Canada

Your Authorized Representative is:



info@e-s-c.com  
 1.844.372.8877 | www.e-s-c.com  
 122F Commerce Park Drive  
 Barrie, ON L4N 8W8  
 Canada